

SUMA DE ARQUITECTURA E INGENIERIA S.L.

COMPANY ACTIVITY

S U

M A

SUMA DE ARQUITECTURA E INGENIERIA + NUEVAS IDEAS PARA NUEVOS TIEMPOS
ARQUITECTURA ECO-EFICIENTE CONSTRUCCION SOSTENIBLE

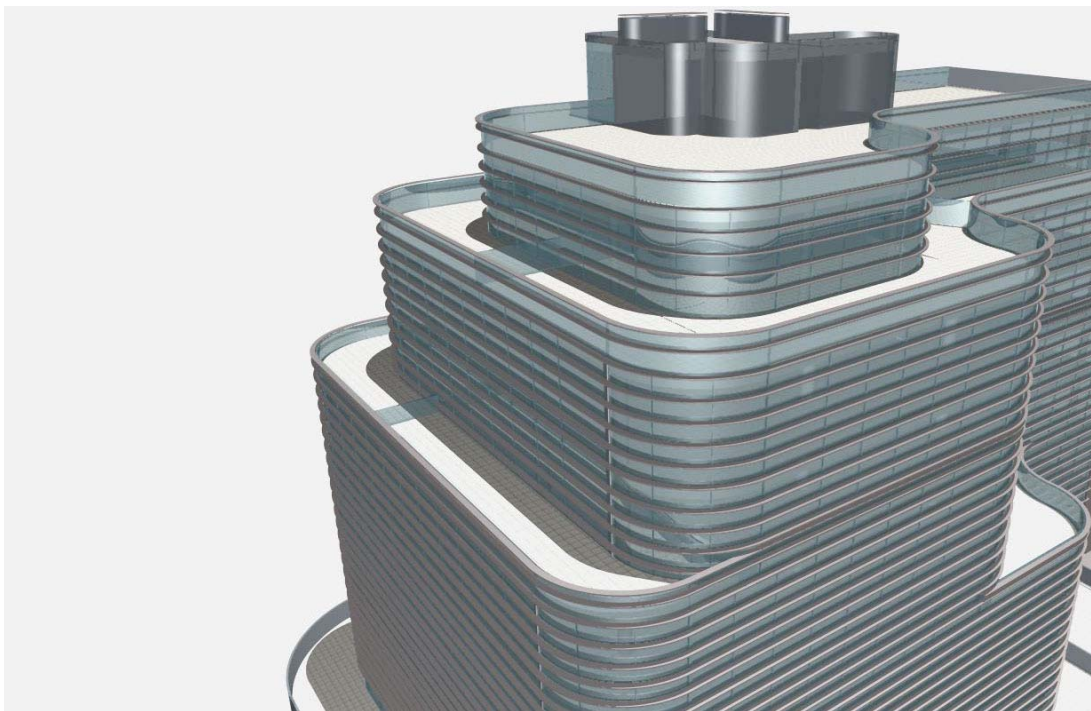
EDIFICIO TORRES BLANCAS - CORAZON DE MARIA 2, PLANTA 21, PUERTA 40 - 28002 MADRID - TEL 914162371 - FAX 914156893
HORARIO: 8-14 Y 15-17 L-X Y 8-15 V - SUMA.CONSULTORIA@GMAIL.COM - WWW.ARQUITECTURAMASINGENIERIA.COM

CONTENTS

1. BACKGROUND AND OBJECTIVE
2. ACTIVITY AND SERVICES PROVIDED BY SUMA
3. COMPANY PERSONNEL AND CURRICULUM
4. TECHNICAL DEPARTMENT AND AUXILIARY SYSTEMS

1. BACKGROUND AND OBJECTIVE.

The aim of this document is to make known the technical and human systems available to our company for the complete development of building projects of all kinds: consultancy, monitoring and management of each of their facets. The company also provides supervision services and works management throughout Spain.



New offices under construction at Avenida Méndez Álvaro 58, Madrid

Enrolled on the Company Register of Madrid.

V.A.T. Reg. No.: B-42178087

Fiscal residence: calle Corazón de María 2, 21st floor 40. Madrid 28002.

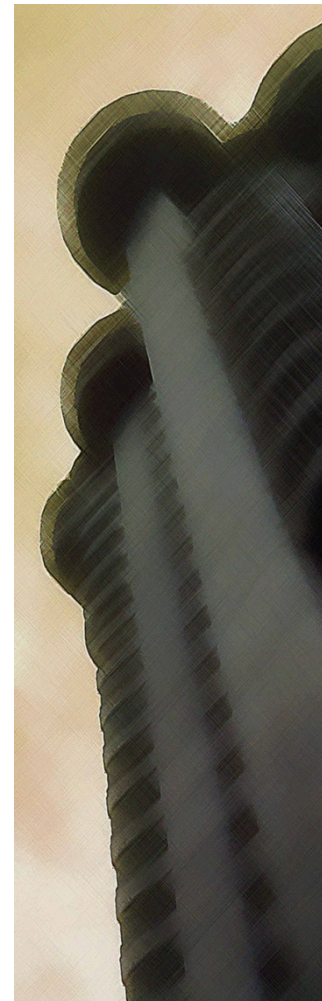
2. SUMA ACTIVITY AND SERVICES

As in any other market, architecture and construction are constantly developing and evolving. This is the reason why **Suma de Arquitectura e Ingeniería, S.L.** was established: in response to the need to adapt architectural projects to the growing requirements in quality, technical innovation, safety and energy efficiency called for by the new regulations and by the increasingly demanding consumer.

Thus, Suma relies on a team comprising architects, industrial and telecommunications engineers, quantity surveyors and draughtsmen who work as a team not only to carry out the works commissioned but also to advise on the implications in construction, on the technicalities and regulations involved, which means an added value in terms of the quality of the product for the client.

We also make every effort to put the new technologies to the best advantage. This allows us to keep the client informed, at all times, of any incidents and as to how the work is progressing, without overlooking the personal treatment that is so necessary for the success of any assignment.

Suma focuses its activity on the central part of Spain, with the company's main headquarters in Madrid, in the emblematic Torres Blancas Building, C/Corazón de María, 2 planta 21, 28002 - Madrid



3. PERSONNEL, CURRICULUM AND WORKS COMPLETED

Suma is made up of various senior and intermediate level qualified professionals who develop their activities in the field of engineering and architecture, in all their specialized fields, drawing up reports, studies, projects as well as being responsible for work management in order to solve any unforeseen event that may occur to the client.

Suma has the following team of professionals available who, together, have developed more than 200 works:

- 5 architects specializing in building
- 1 architect specializing in town planning
- 1 industrial engineer specializing in transport
- 1 industrial engineer specializing in electronics.
- 1 telecommunications engineer.
- 1 industrial technical engineer specializing in structures.
- 1 technical architect.
- 1 draughtsman.
- 1 administrative clerk.



4. COMPANY ACTIVITY:

Development of up to 200 projects in a wide range of specialities, ranging from educational centres to activity licences, through to calculating and designing buildings that are unique. These works include calculating installations and the structural project for a large number of less important projects: terraced housing, semi-detached housing, houses, nursery schools, offices, shops, etc.



Overall development of numerous building projects of all types; accommodation blocks in Madrid, Moraleja de Enmedio, Navalcarnero, Soria, family housing in Soria and Madrid, industrial premises (Norma, Morpra, Prozide, Yagüe ...), renovation works in Madrid and Soria, office projects in Madrid, Alcorcón and Pozuelo, projects for activity licences for GAES in Madrid and various aesthetic centres for Soria Natural.

5. TECHNICAL DEPARTMENT AND AUXILIARY SYSTEMS.

Suma de Arquitectura e Ingeniería S.L. currently has an office open in Madrid, in the Torres Blancas Building, C/Corazón de María, 2 planta 21, 28002 – Madrid, while maintaining the original office in Soria, at Avenida Duques de Soria No. 6 C.P. 42003.

Telephone: 914 162 371

Fax: 91415 68 93

Website: www.arquitecturamasingeneria.com

E-mail: suma.consultoria@gmail.com

Adequate auxiliary systems are available for developing Architectural and Engineering Projects.

Office equipment.

- 8 Pentium 4 computers (3 dual core)
- 1 Tablet PC Lenovo X61
- 1 Fujitsu Siemens laptop
- One HP plotter
- 2 HP A3 and A4 printers
- 1 HP scanner
- 1 Dell 2900 server
- Various auxiliary material; camera, gages for various types of work ... etc.

The details appearing in this document are of a confidential nature and are exclusively for consultation by the addressee.

CONCLUSION

We would be delighted to provide you with further details of our company, at our main headquarters in Madrid, at Edificio Torres Blancas, C/Corazón de María, 2 planta 21, 28002 – Madrid, or at our offices in Soria, at Avenida Duques de Soria nº6 C.P. 42003.

We are open to attend clients from 8 a.m. to 2.30 p.m., and from 3.30 p.m. to 6 p.m., from Monday to Thursday, and from 8 a.m. to 3 p.m. on Fridays. Our contact details are

Telephone: 914 162 371

Fax: 91415 68 93

Website: www.arquitecturamasingeneria.com

E-mail: suma.consultoria@gmail.com

We trust that you find this information of interest.

Yours faithfully,

A handwritten signature in blue ink, consisting of a large, stylized loop followed by the initials 'CE'.

César Frías Enciso

SUMA Technical Director